



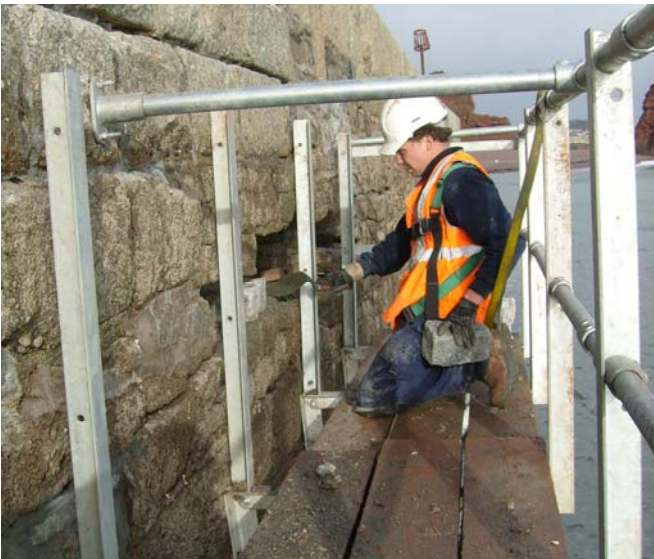
DYER & BUTLER

Case Study

Dawlish Sea Wall Repairs



THE SUCCESS OF THE PROJECT WAS FOUNDED ON THE DEVELOPMENT OF AN EFFECTIVE TEAM AND THE IMPLEMENTATION OF NEW WORKING PRACTICES BASED ON A SOUND KNOWLEDGE OF THE DEVON COASTAL DEFENCES



Client: Network Rail

Duration: April 2007- April 2010

Location: Exeter to Newtown Abbott, including Exmouth and Lympstone

Form of Contract: JCT 98

Value: £1.2m

Civil Engineering and Building

CASE STUDY

DAWLISH SEA WALL

- Dyer & Butler successfully won a framework contract with Network Rail in 2007 to undertake reactive and planned maintenance to the Devon coastal defences which provide protection to the mainline railway in South Devon.
- The coastal defences range from pitch walling to granite breakwaters. The defences take the brunt of South West-erly gales during the winter months and work is year round to maintain operation of the only rail connection between Devon/Cornwall and London. To ensure that the railway is operational at all required times, Dyer & Butler provide a 365 day on call facility to respond to emergency works. These works can involve the rectification of trip hazards to pedestrians on the sea wall to large scale re-placements to blown out sections of the sea wall.
- The coastal defences, originally built by I K Brunel as part of his atmospheric railway, have been subject to continuous maintenance over recent years. Dyer & Butler, along with our client Network Rail, have investigated methods to reduce the level of maintenance intervention through improved asset management and new maintenance techniques.
- The contract provided unique challenges to Dyer & Butler not only due to the environment, but also due to Network Rail's desire to work outside the summer holiday period. Challenges to overcome were not only weather and tide restrictions, but also access, only available by rail at some of the locations. Works were undertaken successfully with the use of road rail plant and access from the sea.
- With the partially rebuilding of 5 of the breakwaters, the front line protection to the railway has once again been established.

HEAD OFFICE

Mead House Station Road Nursling
Southampton SO16 0AH

Tel: 023 8074 2222

Fax: 023 8074 2200

enquiries@dyerandbutler.co.uk

www.dyerandbutler.co.uk

PLYMOUTH

Tel: 01364 646140

Fax: 01364 646149

enquiries.plymouth@dyerandbutler.co.uk

GATWICK

Tel: 01293 567153

Fax: 01293 569182

enquiries.gatwick@dyerandbutler.co.uk

HEATHROW

Tel: 020 8759 8634

Fax: 020 8759 1578

enquiries.heathrow@dyerandbutler.co.uk

STANSTED

Tel: 01279 682230

Fax: 01279 682231

enquiries.stansted@dyerandbutler.co.uk

SWANSEA

Tel: 01792 465937

Fax: 01792 466123

enquiries.swansea@dyerandbutler.co.uk



Multi-disciplinary teams ensure efficient planning and execution of the work.